

# PushShare Dongle (PSDV1) and Receiving Unit (PSRV1)



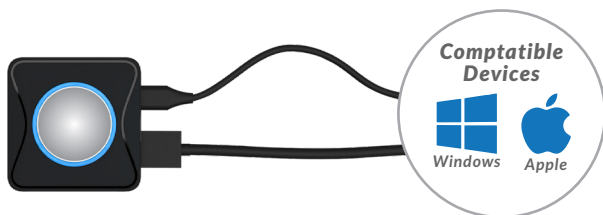
## Simple Wireless Mirroring

PushShare enables smooth collaboration during meetings by allowing participants to wirelessly mirror their devices to any presentation screen or projector for more productive meetings. Connect the Receiving Unit to your presentation screen and the dongle to your device, and then a simple push of the button will start wirelessly sharing the device's display to your presentation screen. This simple system suits user behaviour so anyone can use it without the need for any installation or training – maximising the return on your investment.



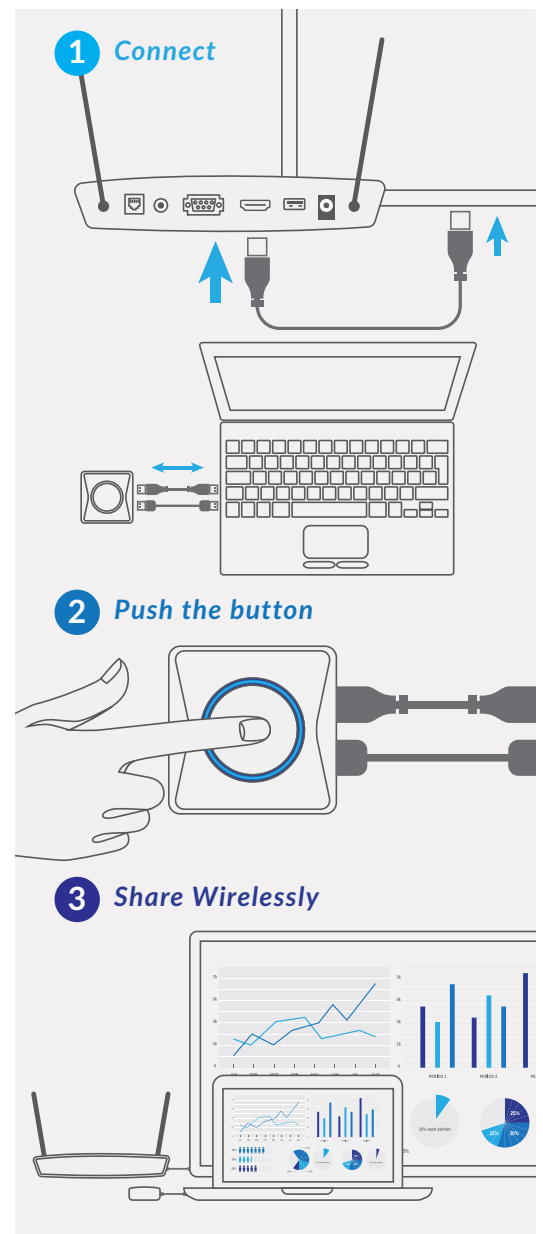
## Universal Compatibility

Bring Your Own Device! PushShare enables users connect wirelessly to your presentation screen in seconds using any device that can output a HDMI signal, such as Windows or Mac laptop or PC. This truly is a fully agnostic solution.



## Touch Screen Interactivity Supported

If you are using an interactive presentation screen you can connect the Receiving Unit via HDMI and USB then connect the PushShare dongle to your device and control your device from your interactive presentation screen, providing two way interactivity. This is ideal when using PushShare to interact with a presentation on your laptop.



## Other Features

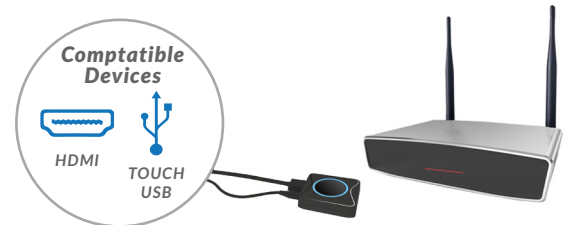
### High Security Protection

The connection between the PushShare dongle and your Receiving Unit is fully password protected. PushShare is able to be seamlessly integrated into any IT network as it uses the hotspot network created by the Receiving Unit. Users can be sure that their mirroring is protected and secure between the devices.



### HDMI Display Compatible

The PushShare Receiving Unit is able to connect to any presentation screen or projector simply by connecting via HDMI.



### Multi-Screen Mirroring

With multiple PushShare dongles up to nine separate devices can connect to the same Receiving Units simultaneously. This is ideal for collaborative meetings that also require interactivity.



### Easy Integration with Existing hardware

The PushShare Receiving Unit was designed for easy integration with existing hardware. Just connect via HDMI (or VGA and 3.5mm audio) to legacy equipment and experience the full power of PushShare.



|                       |                              | PushShare Receiving Unit  |
|-----------------------|------------------------------|---|
| Connections           | Ports                        | 1 x HDMI (audio video signal transfer), 1 x USB type C (power, touch, pairing and upgrades)   |
| Support               | Sending Devices Supported    | Any display with HDMI input   |
|                       | *Receiving Devices Supported | PushShare dongle (PSDV1)  |
|                       | Touch Control                | 16-point touch via Windows: 7/8.1 and 10, 1-point touch via macOS X 10.10,10.11,10.12,10.13 and 10.14, Airplay iOS: 9,10, 11, 12, Android 5.0 or higher (need to install PushShare APK) |
| Audio Visual          | Resolution - 1 Display       | 1920x1080 (P30)   |
|                       | Resolution - 4 Displays      | 3840x2160 (P30)   |
|                       | Simultaneous Connections     | 1-9   |
|                       | Audio                        | 44.1KHz/48KHz/16bit PCM (Stereo)  |
| Wireless Transmission | Protocol                     | IEEE 802.11ac/802.11n   |
|                       | Rate                         | 867Mbps   |
|                       | Distance                     | ≈30m  |
|                       | Frequency Band               | 2.4 GHZ and 5 GHZ   |
|                       | Authentication Protocol      | WPA2-PSK  |
|                       | Average Transmission Delay   | <100ms  |
| Power                 | Power Consumption            | 12V/1A, average power consumption 5W  |
| Mechanical            | Unit Size (WxHxD mm)         | 180x110x34  |
|                       | Net Weight (g)               | 630   |
|                       | Package Size (WxHxD mm)      | 336x222x72  |
|                       | Gross Weight (g)             | 1395  |
| Environmental         | Operating Temperature        | +5°C ~ +40°C  |
|                       | Storage Temperature          | -20°C ~ +60°C   |
|                       | Operating Humidity           | 0 ~ 90%   |
|                       | Storage Humidity             | 0 ~ 90%   |
| Accessories           | Included                     | Wi-Fi aerial x 2, HDMI cable x1 (540mm), Power plug and cable   |
| Warranty              | Warranty Period              | 3 Years   |
|                       | Technical Support            | Lifetime  |