



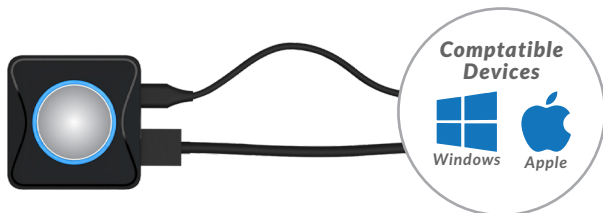
Simple Wireless Mirroring

PushShare enables smooth collaboration during meetings by allowing participants to wirelessly mirror their devices to the Interactive Touch Display* for more productive meetings. Once the dongle is connected to your device of choice, a simple push of the button will start wirelessly sharing the device's display to your Interactive Touch Display* instantly. This simple system suits user behaviour so anyone can use it without the need for any installation or training – maximising the return on your investment.



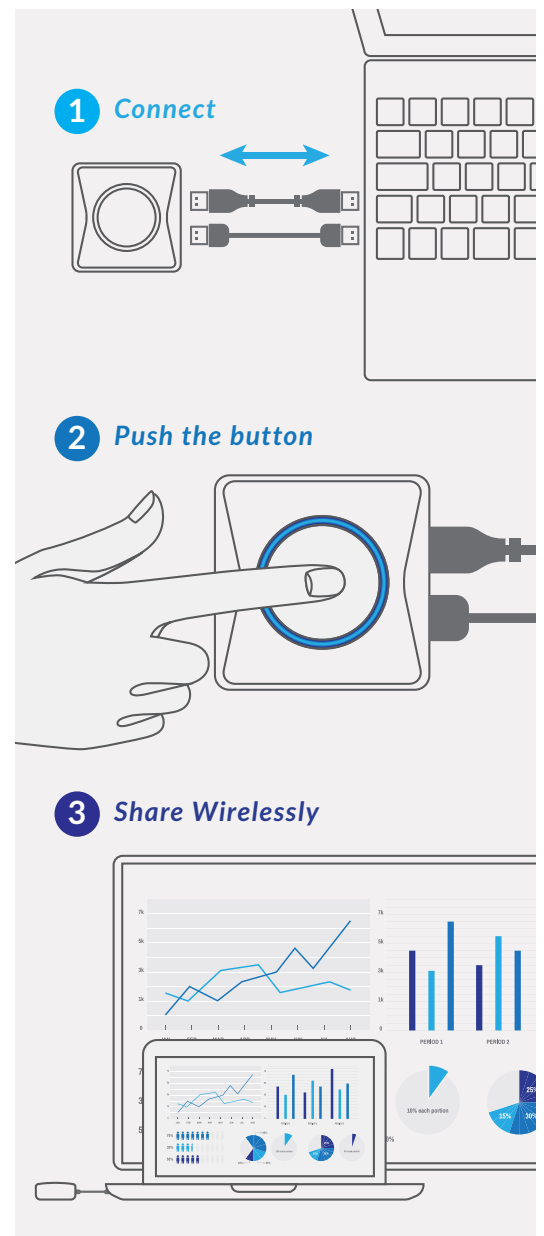
Universal Compatibility

Bring Your Own Device! PushShare enables users connect wirelessly to their Interactive Touch Display* in seconds using any device that can output a HDMI signal, such as Windows or Mac laptop or PC. This truly is a fully agnostic solution.



Touch Screen Interactivity Supported

Once you have connected the PushShare dongle to your device you can use the Interactive Touch Display* to control your device, providing two way interactivity. This is ideal when using PushShare to interact with a presentation on your laptop.



Other Features

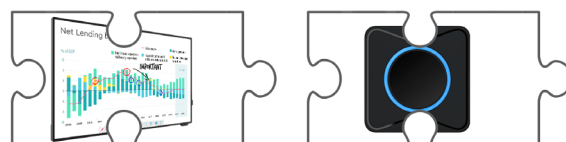
High Security Protection

The connection between the PushShare dongle and your Interactive Touch Display* is fully password protected. PushShare is able to be seamlessly integrated into any IT network as it uses the hotspot network created by the Interactive Touch Display*. Users can be sure that their mirroring is protected and secure between the devices.



Seamless Integration

The PushShare dongle and Interactive Touch Displays* have been designed in conjunction with one another for ultimate collaboration. The receiver hardware and software that the dongle communicates with is already integrated into your Interactive Touch Display*.



Multi-Screen Mirroring

With multiple PushShare dongles up to four separate devices can connect to the same Interactive Touch Displays* simultaneously. This is ideal for collaborative meetings that also require interactivity.



Cost Effective Solution

As a budget friendly meeting room solution, PushShare is essential for businesses. With only a dongle needed to improve collaboration and efficiency during meetings and presentations, the cost effectiveness cannot be compared.



| | | PushShare Dongle |
|-----------------------|------------------------------|---|
| Connections | Ports | 1 x HDMI (audio video signal transfer), 1 x USB type C (power, touch, pairing and upgrades) |
| Support | Sending Devices Supported | Any device with HDMI output |
| | *Receiving Devices Supported | PushShare Receiving Unit (PSRV1) or Allsee PTxxF and PTxxG ranges |
| | Reverse Touch Control | 10-point touch via Windows 7, 8.1 and 10, 1-point touch via macOS |
| Audio Visual | Resolution | 1920x1080 (P60) |
| | Encoding Resolution | 1920x1080 (P30) |
| | Simultaneous Connections | 1-4 (Seperat Dongles) |
| | Resolution - 4 Displays | 3840x2160 |
| | Audio | 44.1KHz/48KHz/16bit PCM (Stereo) |
| Wireless Transmission | Protocol | IEEE 802.11ac/802.11n |
| | Rate | 867Mbps |
| | Distance | ≈30m |
| | Frequency Band | 2.4 GHZ and 5 GHZ |
| | Authentication Protocol | WPA2-PSK |
| | Average Transmission Delay | <150ms |
| Power | Power Consumption | 5V/500mA, average power consumption 1.5W |
| Mechanical | Unit Size (WxHxD mm) | 64x63x20 |
| | Net Weight (g) | 70 |
| | Package Size (WxHxD mm) | 215x92x25 |
| | Gross Weight (g) | 215 |
| Environmental | Operating Temperature | +5°C ~ +40°C |
| | Storage Temperature | -20°C ~ +60°C |
| | Operating Humidity | 0 ~ 90% |
| | Storage Humidity | 0 ~ 90% |
| Accessories | Included | HDMI cable x 1 (100mm), USB type C to type A cable x 1 (170mm), HDMI adapter (standard to mini HDMI), HDMI adapter (standard to micro HDMI) |
| Warranty | Warranty Period | 3 Years |
| | Technical Support | Lifetime |

*Compatible Models: PTxxF, PTxxG, PSRV1