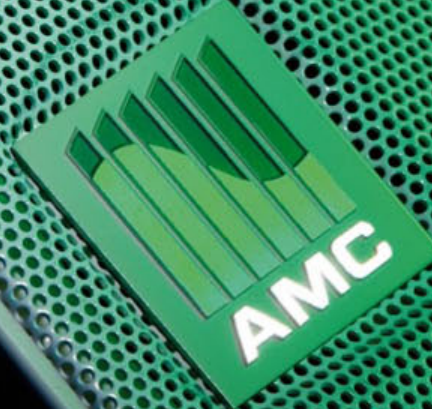
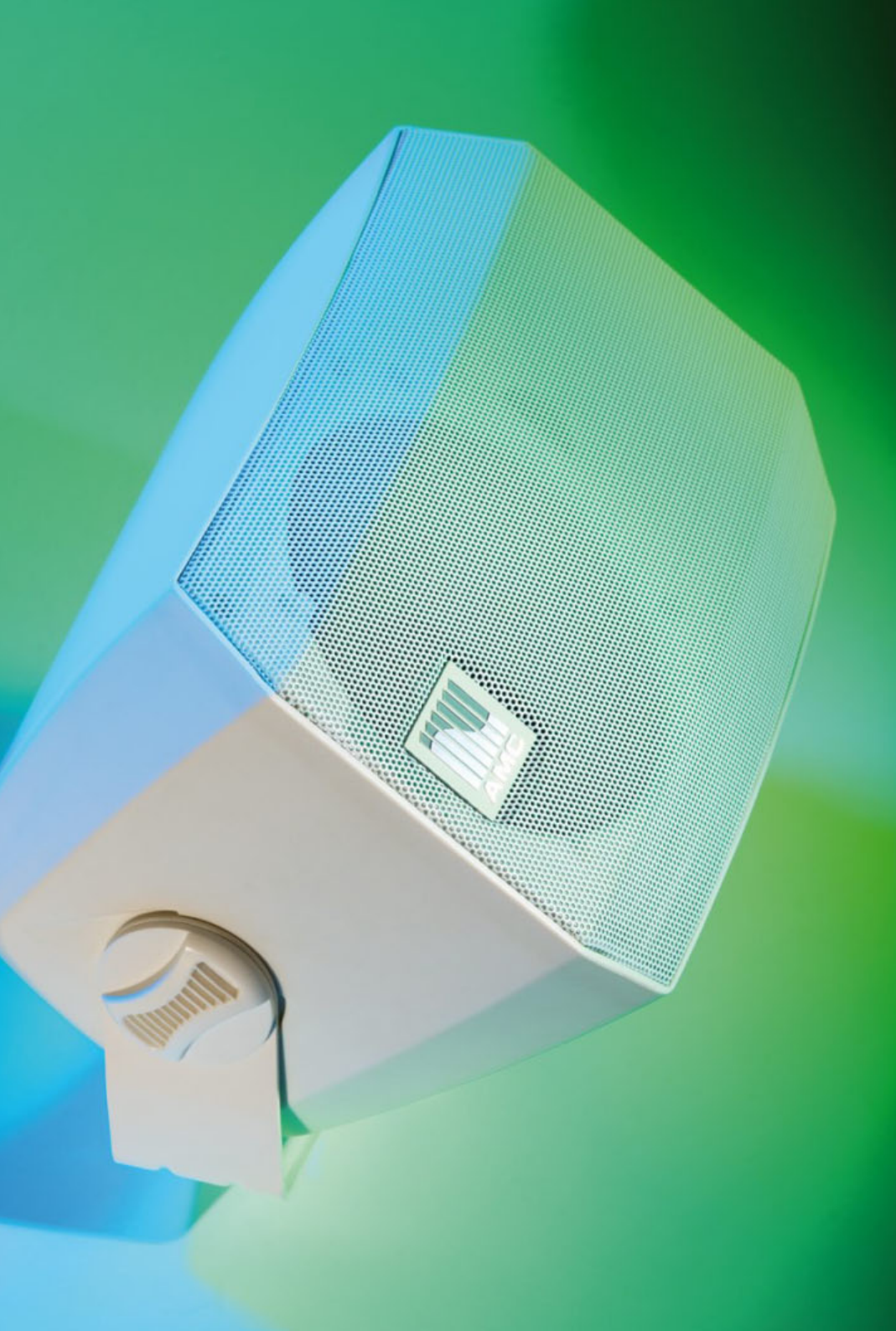




Simple. Reliable. Profitable.



VIVA5

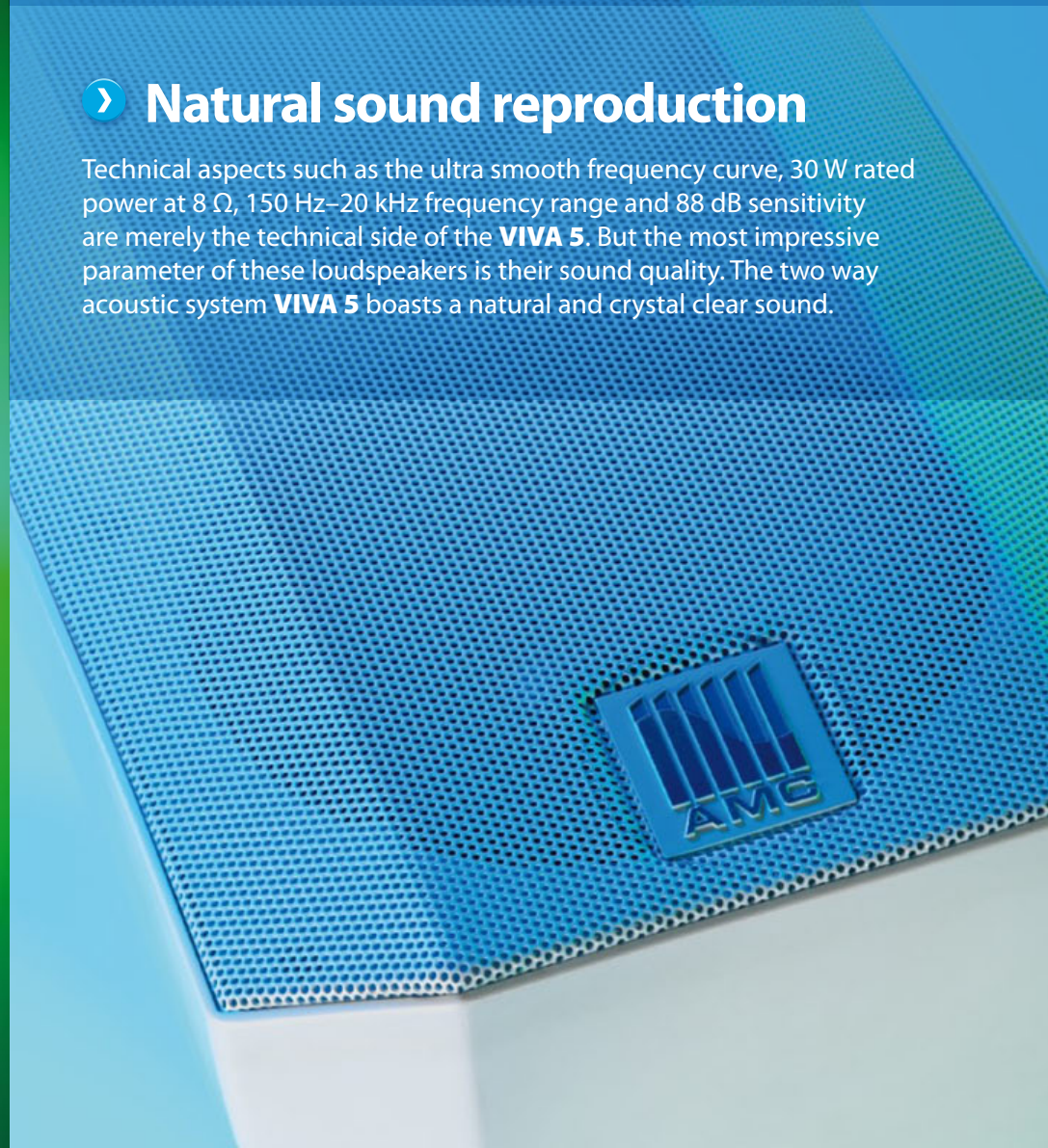


➤ **Elegant contemporary design**

Sleek yet distinct lines, smooth cabinet surface and the mild grill of the **VIVA 5** does not leave anyone indifferent. It is its classic shape with its advanced twist that lets this loudspeaker easily adapt to a wide variety of contemporary interiors and become an integral part of the architectural environment.

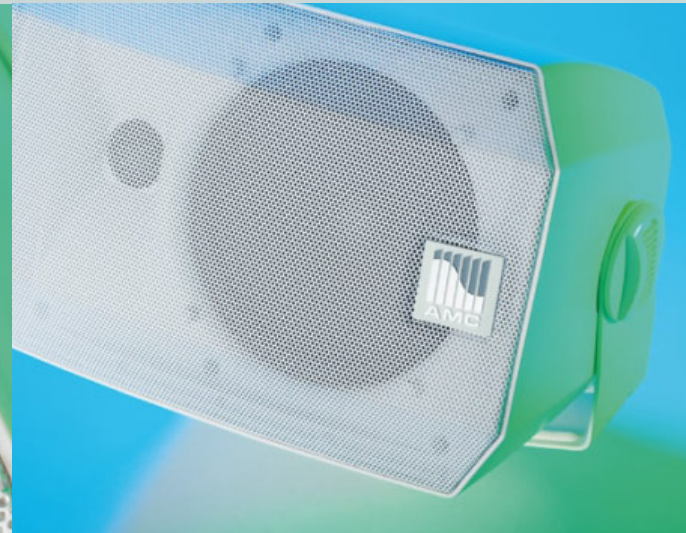
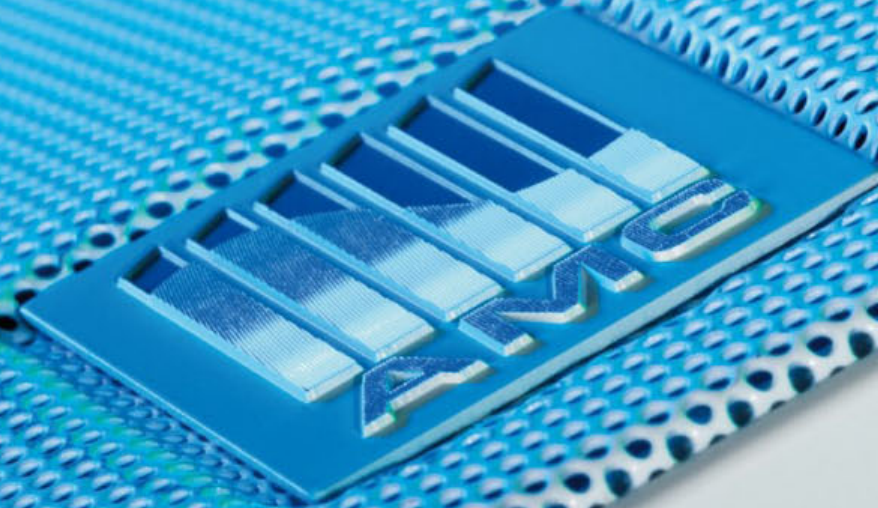
➤ **Natural sound reproduction**

Technical aspects such as the ultra smooth frequency curve, 30 W rated power at 8 Ω , 150 Hz–20 kHz frequency range and 88 dB sensitivity are merely the technical side of the **VIVA 5**. But the most impressive parameter of these loudspeakers is their sound quality. The two way acoustic system **VIVA 5** boasts a natural and crystal clear sound.



➤ Attention to detail

The AMC logotype on the **VIVA 5** loudspeakers rotates around its axis in 90° steps. This allows horizontal or vertical mounting while the logo stays legible. It is this kind of small detail that we keep in mind while designing AMC equipment.





› New mounting possibilities

Our newly designed U-bracket construction enables a wide array of mounting possibilities. This semi circle bracket not only looks good, but allows easy adjustment of the mounting angle within a 15° range.





› Simple adjustment

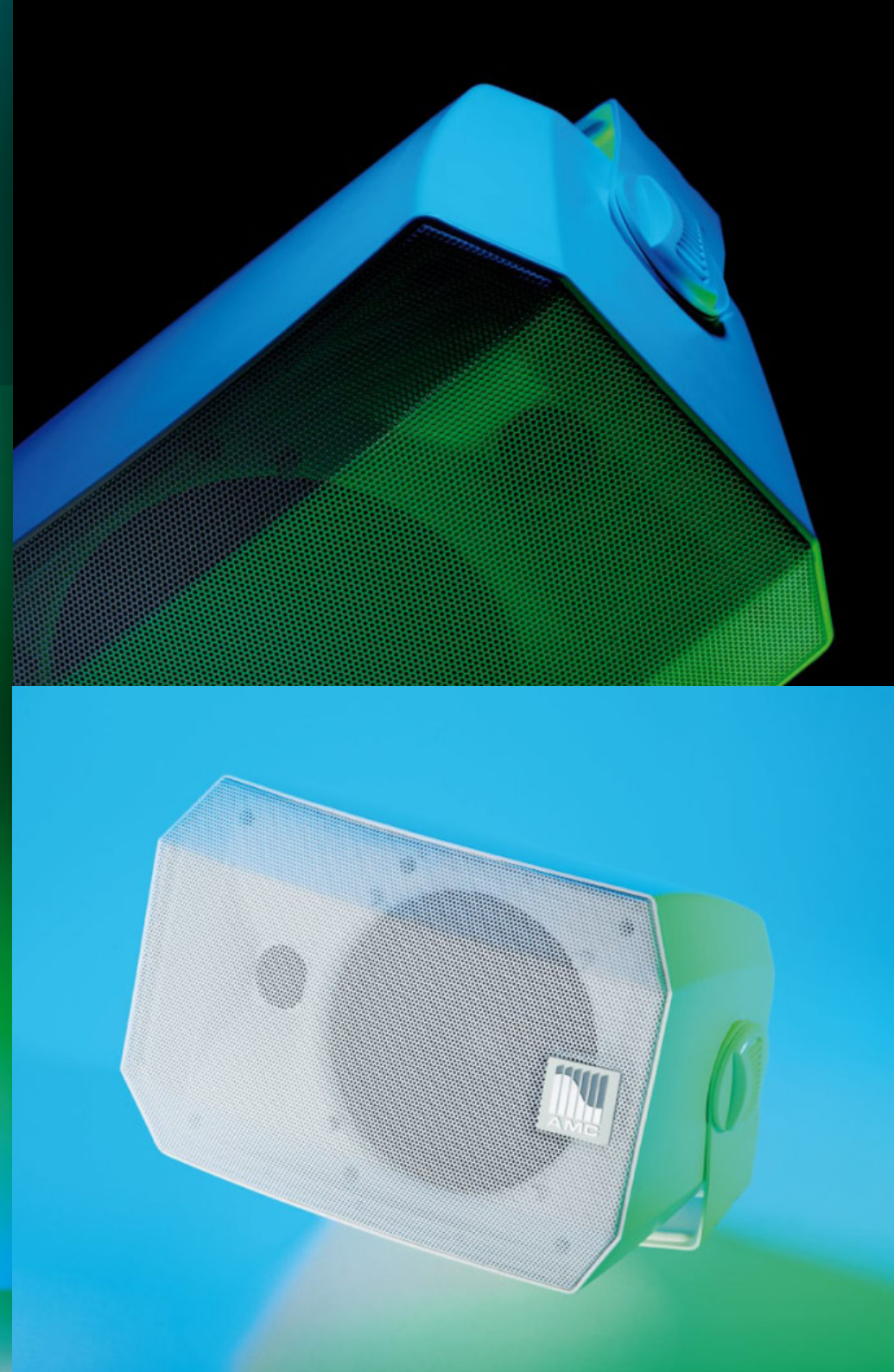
Power adjustment of this loudspeaker is very simple. The ultra thin and flat power selector looks elegant and is easy to use. No special tools required for system setup.

› Cutting edge connectors

We employ innovative Phoenix Contact connectors – for a convenient and reliable wire connection. This type of connection is quickly gaining popularity in professional installations. You can easily insert up to 5 mm² bare wire cable into these connectors. Special “Out” pins are integrated for chain linking. The Phoenix Contact connector we use handles up to 5 A of current, so connection reliability is guaranteed.

➤ Quality components

The high quality polypropylene-mica diaphragm and “kapton” coil make the **VIVA 5** midrange driver membrane light and strong. This 5 inch driver produces clear and stable sound from low to mid frequencies. A 1-inch silk dome tweeter adds fine detail while the special two way crossover provides a smooth frequency curve for uncompromised sound reproduction. This carefully harmonized sound system tops our high quality AMC loudspeaker line.



› Three colors for versatility

VIVA 5 loudspeakers come in three colors: white (RAL 9016), light grey (RAL 9018) and black (RAL 9017). Choosing among these options helps them discreetly blend within almost any environment.

BLACK (RAL 9017)

LIGHT GREY (RAL 9018)

WHITE (RAL 9016)

